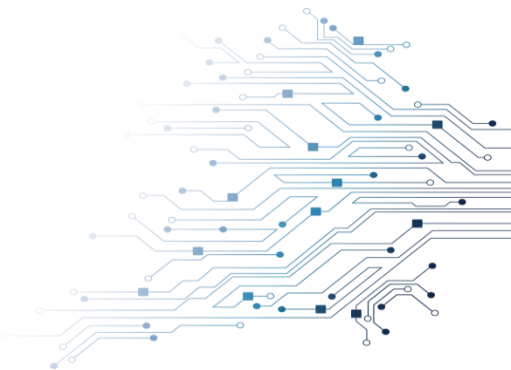


NQ1H+NQ2H Series

UL US CB CE UK CA



New 1W+2W Fixed Input with Reinforced Insulation!

模旬科技 MOTIEN TECHNOLOGY 専門の製造メーカー

最新 DC/DCコンバータを発表 – NQ1H+NQ2H Series

製品特性:

- ✓ 1W +2W 出力電力/ SIP 7 パッケージ
- ✓ 絶縁耐圧 : 5000VAC
- ✓ 定格絶縁動作電圧 : 300Vrms

- ✓ 最大効率 82% (NQ1H) & 86% (NQ2H)
- ✓ 操作温度範囲 : -40°C~+95 °C
- ✓ UL/cUL/IEC/EN 62368-1 認証取得

既存製品との規格比較:

	MOTIEN - NQ1H	MOTIEN - NQ1H-X	MOTIEN - VL	MOTIEN - NQ2H	MOTIEN - NQ2H-X	MOTIEN - VL2
Package	SIP7			SIP7		
Pin Pitch	2.54 mm	2.0 mm	2.54 mm	2.54 mm	2.0 mm	2.54 mm
Pinout compatibility	Compatible	incompatible	Compatible	Compatible	incompatible	Compatible
Short Circuit Protection	YES			YES		
Capacitor Load	68~2200μF	68~2200μF	100~220μF	330~3300μF	330~3300μF	100~1000μF
Isolation Voltage	5000 VAC	5000 VAC	6000 VDC	5000 VAC	5000 VAC	5200 VDC
Case Temperature	+115°C, max.	+115°C, max.	+100°C, max.	115 °C	115 °C	100 °C
Operating Temperature (For Full Load)	-40 ~ +90°C	-40 ~ +90°C	-40 ~ +75°C	-40~90 °C	-40~90 °C	-40~65 °C
CMTI	65 KV/μS @ 1KV	65 KV/μS @ 1KV	N/A	65 KV/uS @ 1KV	65 KV/uS @ 1KV	N/A
Creepage & Clearance	6 mm, min	9 mm, min	N/A	6 mm, min	9 mm, min	N/A
Safety	IEC 62368-1 Reinforced @ 300Vrms working voltage OV2	IEC 62368-1 Reinforced @ 300Vrms working voltage OV3	N/A	IEC 62368-1 Reinforced @ 300Vrms working voltage OV2	IEC 62368-1 Reinforced @ 300Vrms working voltage OV3	N/A



MOTIEN TECHNOLOGY CO., LTD.

[Http://www.motien.com.tw](http://www.motien.com.tw) [Http://www.motien-power.asia](http://www.motien-power.asia)

